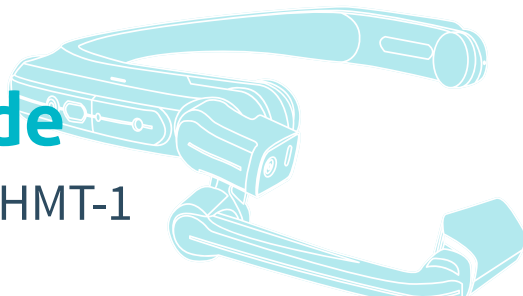


Quick user guide

<XPETEYE> + Realwear HMT-1



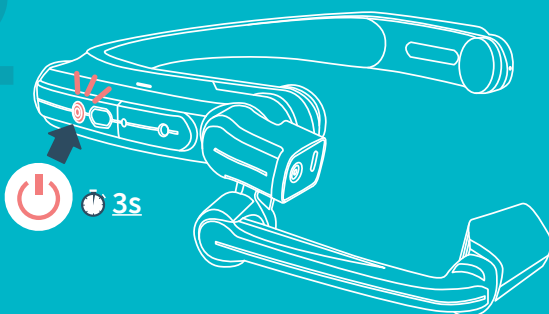
Before using: Make sure the equipment is fully charged. You will find the charging instructions on the back of this document.

START

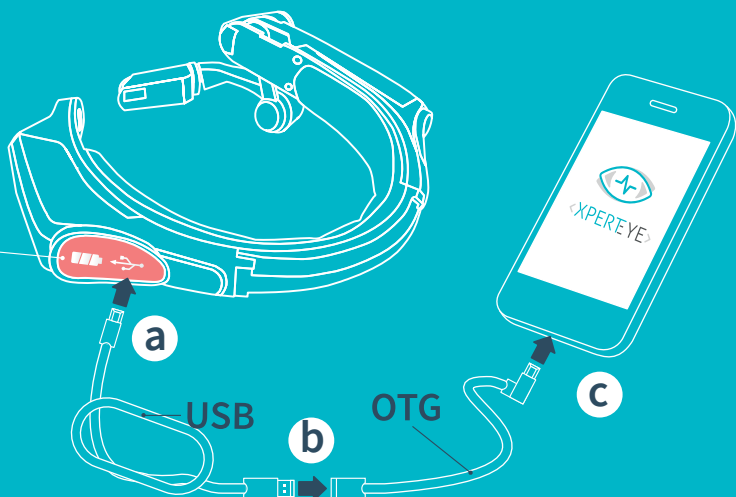
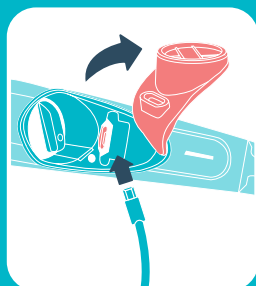
1



2

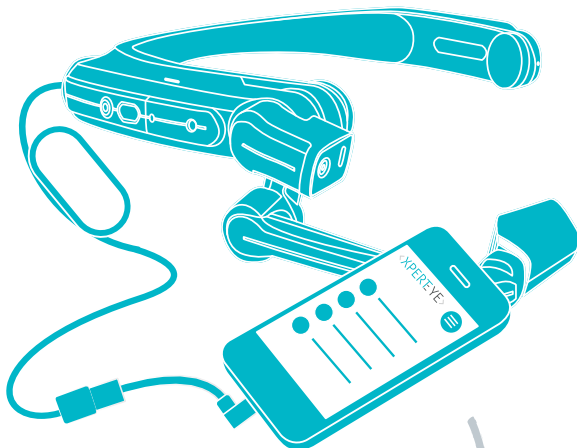


3



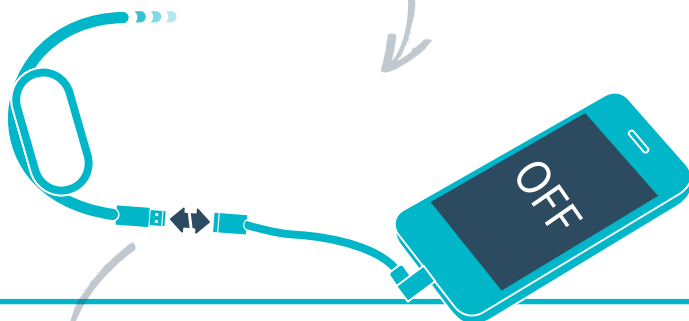
SHUT DOWN / CHARGE

1

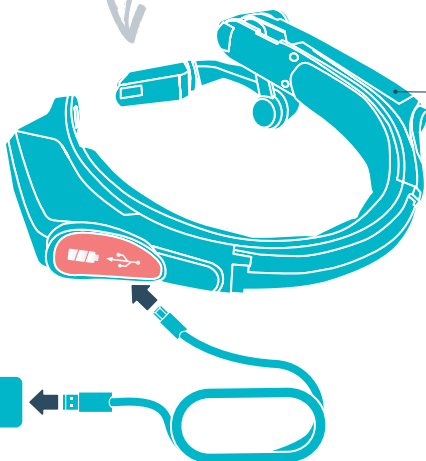


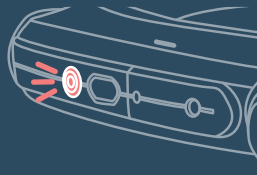
- Open ☰
- Switch off 🔌
- Glasses and smartphone

2



3



- 
- ☀️ ☀️ - Charging
 - ☀️ - Fully Charged



Support :

<https://support.amaxperteye.com>

